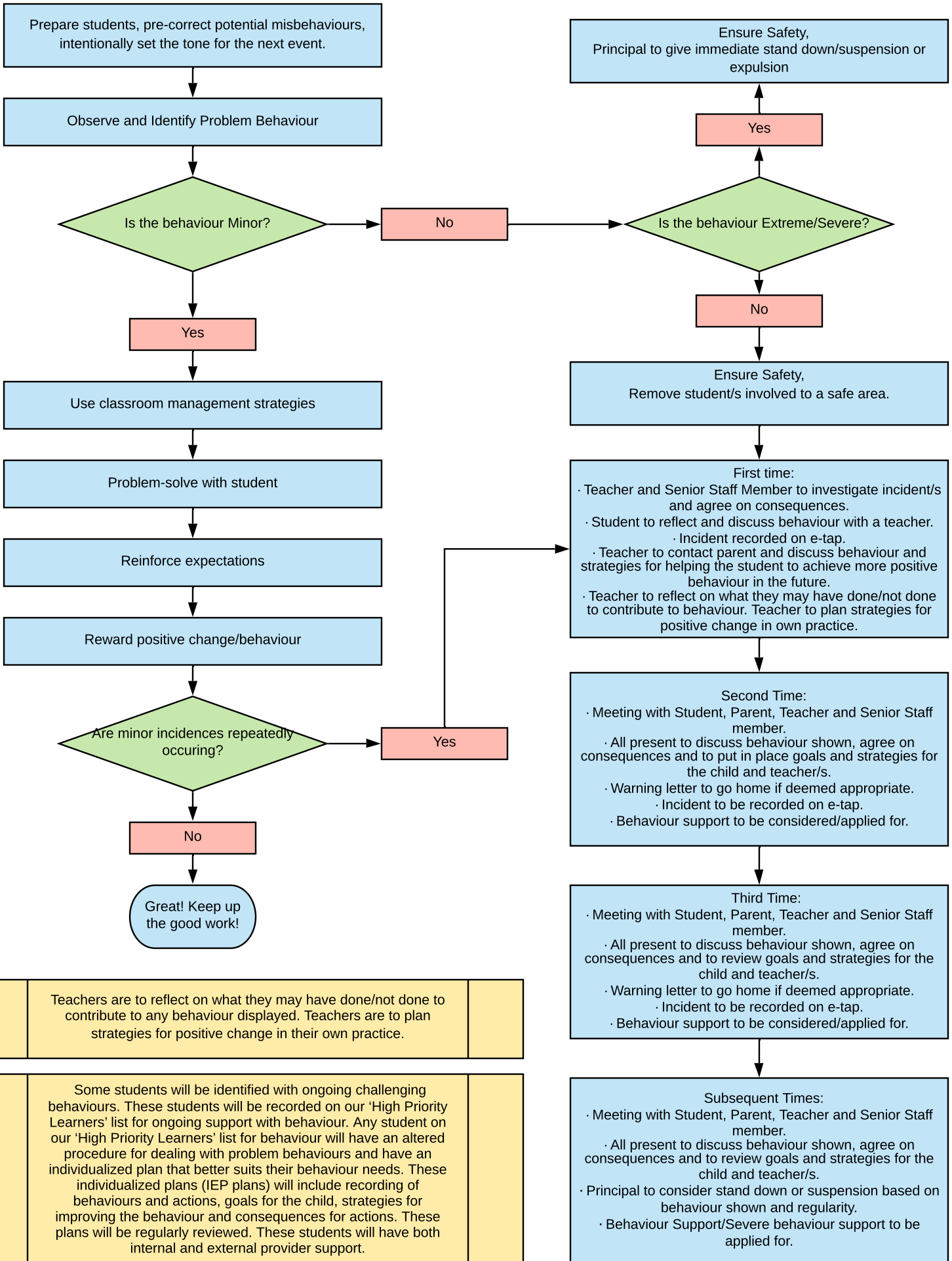


# PETONE CENTRAL SCHOOL BEHAVIOUR MANAGEMENT PROCEDURES



Teachers are to reflect on what they may have done/not done to contribute to any behaviour displayed. Teachers are to plan strategies for positive change in their own practice.

Some students will be identified with ongoing challenging behaviours. These students will be recorded on our 'High Priority Learners' list for ongoing support with behaviour. Any student on our 'High Priority Learners' list for behaviour will have an altered procedure for dealing with problem behaviours and have an individualized plan that better suits their behaviour needs. These individualized plans (IEP plans) will include recording of behaviours and actions, goals for the child, strategies for improving the behaviour and consequences for actions. These plans will be regularly reviewed. These students will have both internal and external provider support.